



CHILD CARE WORKS

Federal and state supported child care subsidies are provided to income-eligible families (200% of poverty), who either work or attend school or training programs and pay a co-pay. Subsidies are paid directly to a provider in a home, child care center, or community-based setting.



HEAD START

Federally funded comprehensive early childhood education program supplemented by state investment. Infant/toddler and pre-kindergarten opportunities at no cost to income-eligible families (100% of poverty). Children with developmental delays or disabilities, or English as a Second Language learners may also qualify. Programs are found in homes, child care centers, schools, and community-based settings.



PRE-K COUNTS

State supported high-quality pre-kindergarten opportunities at no cost to income-eligible families (300% of poverty). Children with developmental delays or disabilities, or English as a Second Language learners may also qualify. Pre-K Counts classrooms are found in child care centers and schools.



SCHOOL DISTRICT

School districts allocate funds from their general fund to support their pre-kindergarten programs.



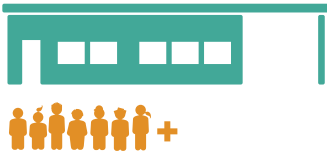
PRIVATELY FUNDED BIRTH TO KINDERGARTEN

User funded programming often provided by a non-profit, for-profit, religious organization, or university.

BIRTH TO KINDERGARTEN FUNDING

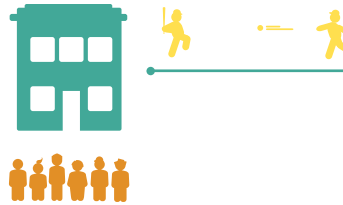
CHILD CARE CENTER

Care and education provided in a center to more than seven children.



FAMILY CHILD CARE HOME

One caregiver that provides care and education in a home setting for three to six children not related to the caregiver.



GROUP CHILD CARE HOME

Care and education provided in a home setting for up to twelve children.



FAMILY, FRIEND, AND NEIGHBOR CARE

One caregiver that provides care and education in a home setting for no more than three unrelated children.

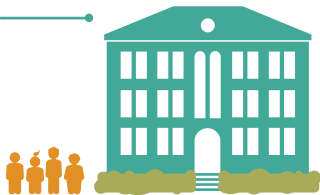


WHAT DOES EARLY CHILDHOOD EDUCATION AND CARE LOOK LIKE IN YOUR NEIGHBORHOOD



PUBLIC SCHOOL

A school that provides pre-kindergarten programming (may be funded privately or publicly).



PRIVATE SCHOOL

A school that provides pre-kindergarten programming (funded by the individual family or school).



PUBLICLY FUNDED SUPPORTS



CHILD AND ADULT CARE FOOD PROGRAM (CACFP)

CACFP provides aid for the provision of nutritious foods for children birth through school age.



QUALITY ASSURANCE

Keystone STARS is Pennsylvania's quality rating and improvement system. NAEYC, NAFCC, and NECPA accreditation are voluntary private-pay national initiatives.



HOME VISITING PROGRAMS AND SUPPORT SERVICES

Trained support specialists visit with young children and their families in their homes. Examples include: Nurse Family Partnership, Healthy Families America, Parents As Teachers, and Early Head Start. Services may be coordinated by a Family Support Center.



EARLY INTERVENTION

System of publicly funded services for infants through school-age children with developmental delays or disabilities.